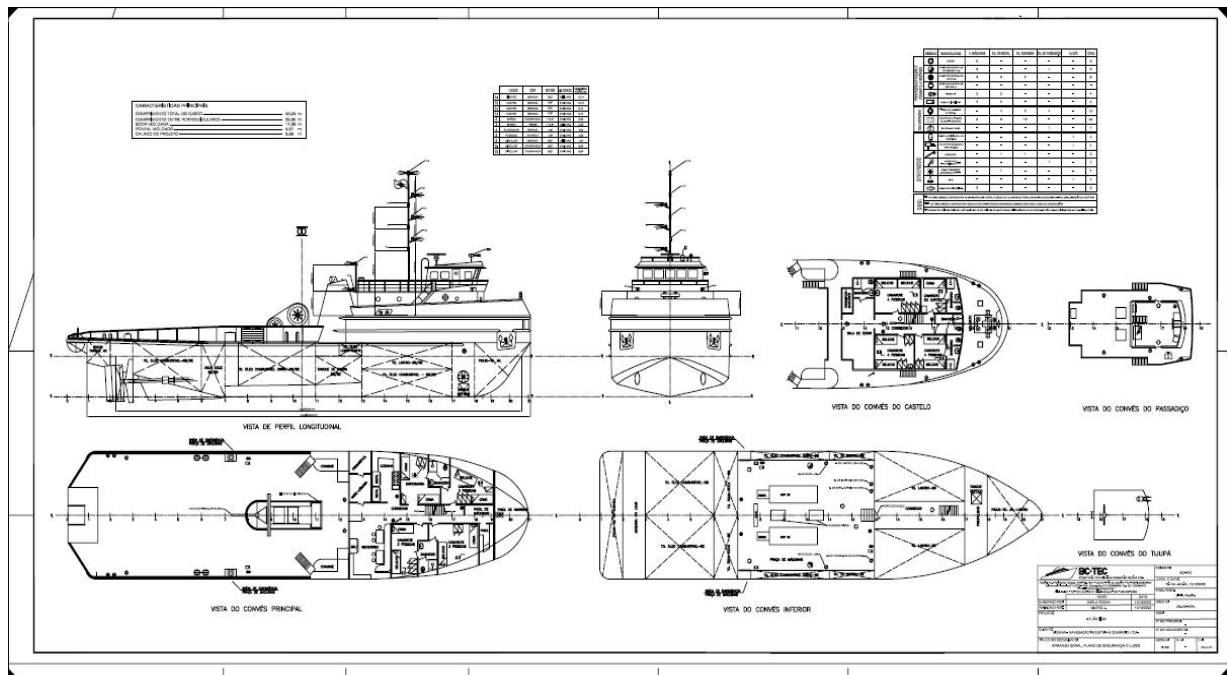




# TUG AND SUPPLY VESSEL **ATLÂNTICO**





# TUG AND SUPPLY VESSEL ATLANTICO

## Principal Particulars

**Name:**.....ATLANTICO  
**Call Sign:**.....PR 9837  
**Flag:**.....BRAZILIAN  
**Port of Registration:**..RIO DE JANEIRO  
**Owner:**.....BIGMAR NAVEGAÇÃO IND. E COM. LTDA.  
**Year Built/Rebuilt:**....1973 / 1998  
**Builder:**.....VEROLME – Estaleiros Reunidos do Brasil S/A.  
**Class:**.....+MAREB / MAEP ME  
**Certificates:**.....BUREAU COLOMBO, ON CLASS

## Main Characteristics

**Length (m):**.....43,24  
**Breadth (m):**.....11,58  
**Depth (m):**.....4,87  
**Draft Loaded (m):**.....4,09  
**Draft Light (m):**.....2,31  
**Gross Tonnage (t):**.....494  
**Maximum Displacement (t):**..973  
**Deadweight (t):**.....604,22  
**Light Ship (t):**.....669,66  
**Bollar Pull (static)**.....67,2 TTE

## Machinery

**Main Engines:**...EMD 645 ES 2 x 2875 BHP  
**Thrusters:**.....GM 8v71 1 x 230 BHP  
**Generators:**.....DELCO – E6617 - 2 x 156 KVA  
**Propellers:**.....2 Kort Tube  
**Rudders:**.....2

## Cargo Capacities

**Free Deck Length (m):**....21  
**Free Deck Width (m):**....10  
**Deck Strength(t/m<sup>2</sup>):**....3,6  
**Deck Max. Load(ton):**....500  
**Potable Water(m<sup>3</sup>):**.....250  
**Oil(m<sup>3</sup>):**.....266



# TUG AND SUPPLY VESSEL **ATLÂNTICO**

## Deck Equipment

**Anchor (kg)**.....2 X 200  
**Chains (quartelada)**....2 X 13

## Performance

**Maximum Speed (knots):**.....13  
**Cruise Speed (knots):**.....10  
**Cruise Consumption (t/day):**...8,5  
**Stand By (t/day):**.....1,7  
**Port (t/day):**.....0,8

## Towing & Anchor Handling

**Towing Winch**.....200 T

## Accommodation

**Officer:**.....10  
**Passenger:**.....6  
**Total Berth:**.....20  
**Air Conditioning**

## Navigation/Communication

**Gyro Compass**  
**Auto Pilot**  
**Echo sounder**  
**Radar 1**  
**SSB Radio**  
**VHF 1**  
**VHF 2**



# TUG AND SUPPLY VESSEL **ATLÂNTICO**

